

Welcome to COSANG



R&D Dept.

Mother Mold



We have our own mold factory.

Investment of 6% turnover per year on mold development.

Mold Factory



Finished Working Molds



Raw Materials

Clay



Clay Crush & Mix



Glaze Agitating tank



Glaze



Workshop

Casting Area



Clay Body Casting



Clay Body Fettling



Integrated Working Molds



Drying

Constant Temperature & Humidity



Wet Clay Body



Basin Clay Body



Toilet Clay Body



In-progress Inspection

Dry Clay Body Fettling



Dry Clay Body Inspection



Air gun to clean the dusty on dry clay-body after Fettling and Inspection



Glazing

360 Circle Glaze Line



Complete Trap-way Glaze



Trap-way Inside



Clay Body Final Inspection



Dry Glaze=Powder Glaze



Smooth the rear side



Load to Kiln Cars



Two Kilns

1st Kiln



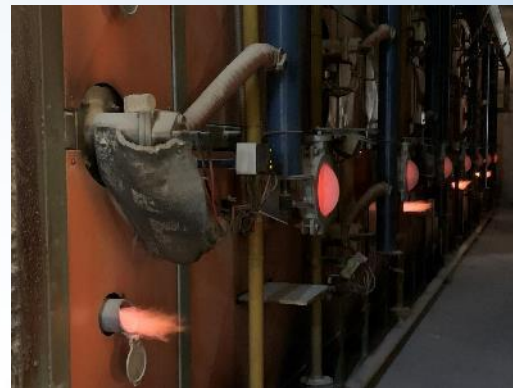
2nd Kiln



1st Kiln has 100m³.

2nd Kiln has 58m³.

Firing



Stable Temperature



First Inspection

Fired Products



Glaze Surface



Appearance Inspection



Crack Inspection



Functional Inspection

100% inspection item by item



Water Test



Vacuum Test



Flushing Test



Packaging



PACKAGING STEPS



Loading





CONTACT INFO

Manager: Kiki Chan

Email: kiki@yalun-cn.com

Wechat&WhatsApp: +86 13288378864

TEL: 86-768-6932589

FAX: 86-768-6932599

潮州市潮安区雅伦陶瓷实业有限公司

CHAOZHOU CHAOAN YALUN CERAMIC INDUSTRIAL CO., LTD

Company Add.: XI YANG AREA, GUWU VILLAGE, GUXIANG TOWN, CHAOAN DISTRICT,
CHAOZHOU CITY, GUANGDONG PROVINCE, CHINA

Company Website: <http://www.yalun-cn.com/>

